



1435 FOXHALL ROAD NW WASHINGTON, DC 20007



Fantastic Semi-Detached Foxhall Townhouse!

This wonderfully located 3 bedroom, 3 bath semi-detached Foxhall townhouse boasts an open floorplan, plenty of flexible space and a bright southern exposure along the long side of the house. Perfect for entertaining, the living room and dining room space is lovely, made even better by the gorgeous new hardwoods. Breakfast is a delight in the back sitting area just steps off of the open kitchen – all flowing beautifully to the expansive patio and back yard.

The master suite has more storage than you can use, and the large master bathroom's deep tub is the perfect retreat after a long day at work . A second spacious bedroom with en-suite bath and even more storage completes the top floor.

Downstairs, there is another large bedroom or recreation room with a full bath, laundry and large storage room. And parking is easy with a two car garage – but given this location, who needs a car? It's less than an easy mile walk to the Palisades and Georgetown's restaurants, cafes and bars. Want some exercise? The C&O trail is seconds away, as is the wonderful Hardy tennis and basketball courts, playground, recreation center and park.

What more could you want? Come, enjoy, and rest easy! You're home!



Casey Aboulafia

GRI, GREEN, ABR, SRS, Realtor®

Direct: 703-624-4657

Email: casey@longandfoster.com

Web: www.homeswithcasey.com

Long & Foster Real Estate, Inc.

2300 Calvert Street NW

Washington, DC 20008

202-483-6300





Living Room



Dining Room



Open Kitchen



Breakfast Room



Master Bedroom



Master Bath

EXTERIOR – Stucco and siding. Slate path leading up to covered front porch. Privacy fence to rear yard. Front grassy area and landscaping.

LIVING ROOM AND DINING ROOM – Beautiful new hardwood floors. Bright open-plan living and dining space perfect for entertaining. Front door with glass for upper panel great for light. Three double-pane west-facing windows and one double-pane south-facing window in living room. Three south-facing double-pane windows in the dining room. Built in bookshelves in the dining area. Chandelier does not convey.

KITCHEN – Open plan kitchen with great view to backyard. Breadboard wainscoting. Recessed lighting. Tall white cabinets with stainless pulls. Crown molding. South-facing double pane window above sink. Stainless steel double sink and cream colored quartz countertops. Stainless steel Frigidaire Gallery Professional Series top-freezer refrigerator, dishwasher and gas range. Beautiful hardwood floors. Pantry closet plus large open pantry shelving. Swing door between dining room and kitchen area.

BACK SITTING AREA – Hardwood floors. Three east-facing casement windows. Sliding door to back yard. One south facing transom window.

UPSTAIRS HALLWAY – Ceiling fan with four lights. Large storage closet with washer dryer hookup, currently used for hanging. Second very large linen closet.

MASTER BEDROOM – Spacious master bedroom with tons of closet space – 3 double-door closets. Hardwood floors. Three double-pane east facing windows and two double-pane south-facing windows. Storage cubby/bookshelf with adjustable floor to ceiling shelving.

SPACIOUS EN-SUITE MASTER BATH – White vanity cabinet with double sinks. Chrome sink fixtures with porcelain handles. Oval mirrors with matching double sconces. Make up vanity mirror on side. Bead board wainscoting. Jetted soaking tub. Two south-facing double-pane windows. Separate makeup area with mirror and double sconce. Three recessed lights. Walk-in separate shower with glass enclosure and white ceramic tile to ceiling. Three rung hotel style towel bar. Separate room with toilet and south-facing double-pane tilt-out window. Overhead recessed lighting.

BEDROOM #2 – Beautiful hardwood floors. Three double- pane west-facing windows and one double-pane south-facing window with beautiful trim. Overhead light fixture. Closet. Mirrored door to bathroom. White slat blinds.

BATHROOM #2 – Bead board wainscoting. White porcelain pedestal sink. Bathtub with white ceramic tile to ceiling. Two recessed lights and vent fan. White mirrored medicine cabinet with double-light sconce. White ceramic tile flooring. Chrome towel bar, soap dish and toothbrush holder.

LOWER LEVEL BEDROOM #3/FAMILY ROOM – Berber carpet. Recessed lighting. Two south facing windows. Crown molding.

FULL BATHROOM #3 – Vanity with porcelain sink. Ceramic tile floor. Storage/linen closet. Standing stall shower. Vent fan. Chrome towel bar and paper holder. Two chrome sconces on sides of mirror.

STORAGE AND LAUNDRY – Under stair storage. Large storage space in laundry room. Samsung front-loading washer and a dryer. Utility sink. Door to backyard. Additional good-sized separate room for storage with two windows to the backyard, recessed lighting and concrete floor.

BACK YARD – Large patio area and expansive grassy yard. Fenced yard.

UTILITIES – Programmable thermostat. Gas and electric heat. Gas hot water. Electric central a/c.

PARKING – Two car garage with automatic door in back of yard. Easy street parking.

FINANCIAL – Taxes \$5,403/year for owner occupant

NEIGHBORHOOD WITHIN 1 MILE:

COFFEE – Bean Counter, Cosi, Jettie's, Georgetown Cupcake, Kafe Leopold's, Midnight Mug, Saxbys Coffee, Starbucks

GROCERY/MARKETS – Black Salt Fish Market, Dean & Deluca, Palisades Farmer's Market, Le Petit Corner Store, Marvelous Market, Pearson's Wine & Spirits, Safeway, Town Square Market, Whole Foods Market, Wisemiller's Grocery and Deli

RESTAURANTS – 1789, Birreria Paradiso, Black Salt, Boeymonger, Café Milano, Clyde's, F. Scott's, Figs Lebanese Café, Georgetown Cupcake, Grill Kabob, Harmony Café, Jetties, Kotobuki, Kuke's Lobster, Leopold's Cafe, Mai Thai, Makoto, Modern, Pizzeria Paradiso, Puro Café, Tackle Box

RECREATION – Hardy Playground and Recreation Center, C&O Trail, Reservoir Playground. Ashtanga Yoga Studio and Potomac Pilates just a bit farther.

TRANSPORTATION – Zipcar, Capital Bikeshare, D6, D5 & G2 bus lines



Bedroom #2



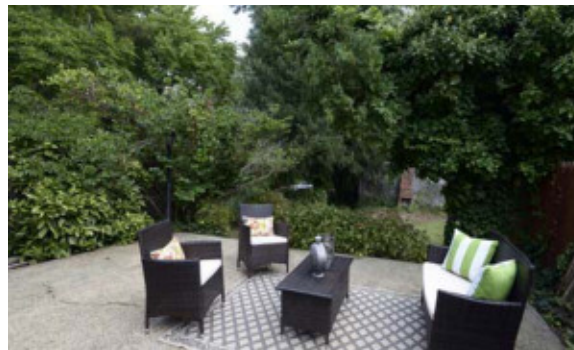
En-Suite Bath #2



Bedroom #/Rec Room



Yard



Patio



Jetties - just steps away!



Casey Aboulafia

GRI, GREEN, ABR, SRS, Realtor®

Direct: 703-624-4657

Email: casey@longandfoster.com

Web: www.homeswithcasey.com

HOMES
with Casey

Long & Foster Real Estate, Inc.

2300 Calvert Street NW

Washington, DC 20008

202-483-6300



Information deemed reliable, but not guaranteed.